

# Threats to our Watersheds:

- ◆ Inadequate sewer/septic systems
- ◆ Unmanaged soil erosion
- ◆ Improper use & disposal of fertilizers & pesticides
- ◆ Aquatic invasive species
- ◆ Aquifers exposed to active and abandoned mine sites
- ◆ Careless use and disposal of petroleum products

To learn more about our activities, become a member, or support the work of the Iron County Watershed Coalition, visit our website:

[www.IronCountyWatershedCoalition.org](http://www.IronCountyWatershedCoalition.org)



## 2019 Schedule of Events

### Annual ICWC Membership Meeting

March 21, 4:30 WID Library

And, on same date:

### “Saving Snow” Film

March 21, 5:30-- WID Library

### “Live, Work, Play”

Iron County Home & Rec Show

April 13, West Iron Co. School

### Special Report on I.C. Water Quality

By Purdue Univ. Students,

May 23, WIDL, 5:30

### Historic Mine Tour

June 30, Iron County Historical Museum

### Float The Paint

July 27, Bates-Amasa Bridge

to Paint River Landing

## Save the dates & join us!

Iron County Watershed Coalition

P.O. Box 367

Iron River, MI 49935

Bette Premo, President: (906) 822-7889

[IronCountyWatershedCoalition@gmail.com](mailto:IronCountyWatershedCoalition@gmail.com)

[www.IronCountyWatershedCoalition.org](http://www.IronCountyWatershedCoalition.org)

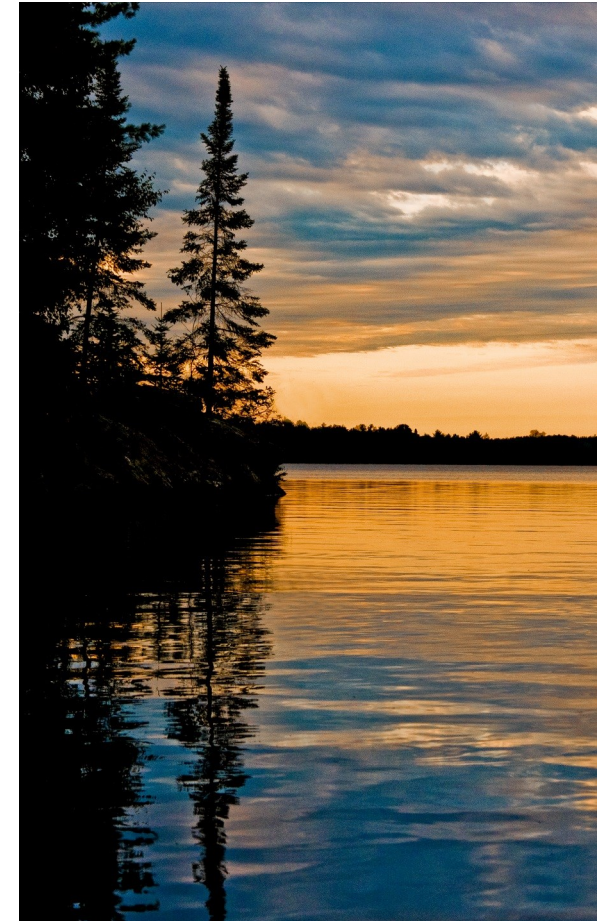
Photos courtesy of Kevin Zini

Special thanks to UPEC and 100+ Women Who

Care for their generous support.

# Watershed Awareness

A project of the  
Iron County Watershed Coalition



Which Watershed  
Do You Live On?



Each colored watershed on this map includes streams, rivers and lakes that all drain into a single larger body of water.

There are 7 watersheds within Iron County's boundaries that drain into Lake Superior, Lake Michigan, and the Mississippi River. Higher elevations divide these watersheds.

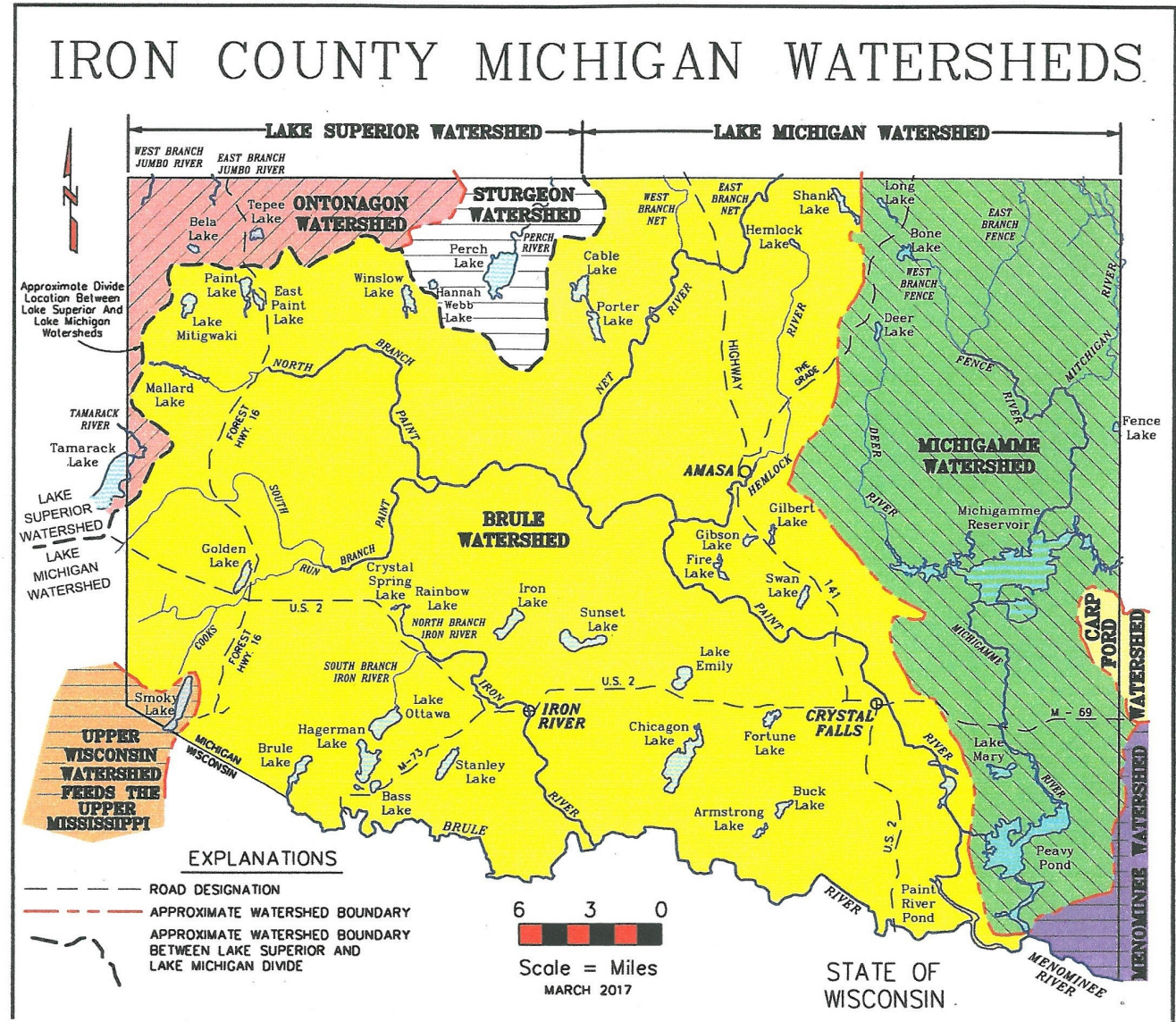
#### Iron County Water Facts:

- You are never more than 2.5 miles from a lake, river or stream
- There are ~240 lakes and 300 miles of rivers & streams, 43 miles of which are Blue Ribbon Trout Streams.
- 18 miles of the Paint River are designated Wild & Scenic.
- Wetlands serve as a sponge to alleviate flooding and filter pollution.

**Our Vision:** The lakes, streams & wetlands of Iron County will be a model of environmental stewardship and sustainable outdoor recreation for present & future generations.

#### ICWC is...

- Inclusive & collaborative
- Reliant on scientific approaches
- Respectful of the economic base our natural resources provide for our community.



**Our Mission:** We work to ensure the highest possible water quality in Iron County lakes, streams and wetlands by educating and engaging our communities in projects that will restore and preserve our watersheds for future generations.