



**Clean Michigan Initiative  
Nonpoint Source Grant**  
2000-0200



**Iron Conservation District**  
Telephone: (906) 875-3765  
Fax: (906) 875-6775  
Email: jbond@mi.kingsfor.fsc.usda.gov

## Iron River Watershed Project

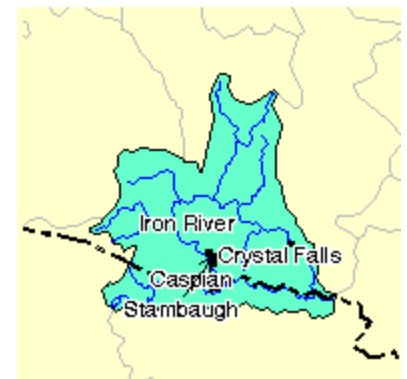
July 10, 2001-October 31, 2004

The Iron River Watershed consists of 38 miles of streams draining 61,445 acres in southwestern Iron County. Of this area, 57% is forested, 16% is urban, 12% is used for agricultural purposes, 7% is wetland, and the remaining 8% falls under other classifications. The Iron River Watershed project was an endeavor initiated by concerned citizens of Iron County who recognized the importance of the Iron River as a blue ribbon brook trout stream. This project was successful in installing numerous Best Management Practices that reduced sediment, phosphorous, and nitrogen from reaching the Iron River.



**Grant Amount: \$ 429,200**  
**Match Funds: \$ 157,000**

**Total Amount: \$ 586,200**



### Best Management Practices:

- 84 linear feet storm water conveyance channel
- storm water treatment unit
- 5,000 linear feet livestock exclusion
  - one alternative watering source
- 1 road-stream crossing stabilized
- 80 linear feet stream bank restoration
- 19,200 square feet hillside restoration
- 4 acres riparian corridor restoration

### Annual Load Reductions:

- 260 tons sediment
- 250 pounds phosphorous
- 500 pounds nitrogen



### Partners involved:

- Dickinson Conservation District
- MDNR Fisheries Division
- NRCS
- RC&D
- City of Iron River
- Camp Ottawa Correctional Facility
- Trout Unlimited
- White Water Associates, Inc.
- Iron River Watershed Council
- MSU Extension
- Jim Shepich
- Phyllis Olsen
- STS Consultants
- Mottes Materials, Inc.
- U.P. Engineers & Architects





**Olsen Before:**

Erosion from livestock access had caused stream bank erosion.



**Olsen After:**

80 linear feet of stream bank was revegetated using soft engineering and restored to a more natural state. A 19,200 square foot riparian buffer was established to filter pollutants and keep them from reaching the river.



**ORV ACE Trail Washout Before:**

The ORV ACE trail experienced a massive washout in which more than half of the trail was swept away down this hill toward the river.



**ORV ACE Trail Washout After:**

An 84 linear foot storm water conveyance channel was installed to reduce erosion. A curb system was installed to direct flow into the storm water conveyance channel.